

# The Exinda 10060

Unified Performance Management for Headquarters/Data Centers



## The Exinda 10060

Designed for headquarter offices and data centers, the 10060 model expands to support up to 10 Gbps worth of traffic and up to 125,000 users.

This appliance has dual power supplies and RAID 10 support. Built upon Exinda's new 64bit architecture, and featuring a multi queue network interface controller (NIC) combined with a multi threaded operating system (OS); this new model offers scalability and performance at a price that satisfies even the most cost-conscious buyers.

## The Challenge

Everyday more and more data is being pushed across our networks. Increased growth and reliance of web based applications, VoIP, streaming video and Internet usage have congested our networks and made them unreliable. Network users are spending more and more time waiting at screen (TWAS) as applications compete for finite resources over stressed, over-run networks. This proliferation of traffic has degraded our networks' speed and performance and resulted in productivity losses.

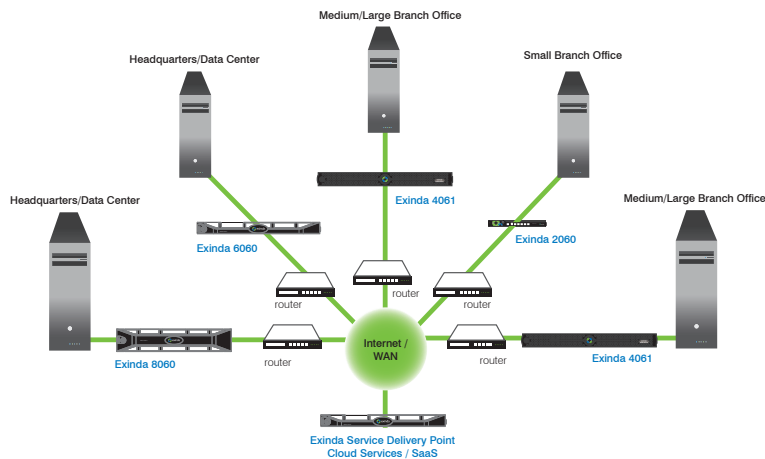
The challenge faced by IT professionals today, is how to gain visibility into the network, identify what applications and users are causing the congestion and put policies in place to ensure applications and data run smoothly over your network, despite the ever-increasing demand.

## The Solution

Exinda provide users with the best network experience possible by maximizing the speed and efficiency of applications over the network.

Exinda's unified performance management (UPM) solution brings together a suite of advanced, best-of-breed, visibility, traffic-shaping and WAN optimization technologies into a single, easy to-use appliance designed to improve network productivity.

Exinda is the only unified performance management solution on the market. Controlled through a seamlessly integrated, unified management console, Exinda reduces costs, increases revenue and allows you to get the most out of your network.



## Visibility

Make informed decisions on managing applications, user experience, and performance.

## Identification

- Layer 7 Classifications
- Heuristic Classification
- URL Classification
- Anonymous Proxy Detection
- Citrix Published Applications
- Active Directory User ID
- VoIP Codec

## Performance

- Application Performance Scoring
- VoIP Mean Opinion Scoring (MOS)
- Service Level Agreements
- Network Efficiency & TCP Health

## Reporting

- Drill Down Capabilities
- Real Time Monitoring
- Top Talkers/Top Conversations
- Automated PDF Reporting

## Control

Guarantee predictable application performance and improve user experience.

## Quality of Service

- QoS / Dynamic per IP / per User
- Application Predictability
- Bandwidth Guarantees & Limits
- Prioritization
- Traffic-shaping

## Fairness

- Bandwidth Management
- Active Directory Integration
- Dynamic Bandwidth Allocation
- Over-subscription

## Optimization

Improve application speed and user satisfaction.

## Protocol & Application

- Layer 4 TCP Optimization
- Layer 7 Application Acceleration
- SSL Acceleration

## Ease of Deployment

- Intelligent Flow Discovery
- Appliance Auto-Discovery
- Transparent (no tunneling)

## Caching

- Universal Caching
- Data Deduplication
- Compression
- Video Caching
- Dynamic URL Caching
- Software Update Caching
- Web Object Caching

## Exinda 10060 Hardware Specifications

Form Factor	19" 2U rack mount
Dimensions	443 x 86 x 681 mm, 17.44" x 3.40" x 26.80"
Weight	26.1 kg / 57.52 lb
CPU	2x Intel Xeon X7560 2.26GHz
RAM	32GB Memory (16x2GB), 1066MHz, Dual Ranked RDIMMs
HDD	6 x 500 GB 7.2K RPM Near Line SAS 3.5" Hot Plug Hard Drive (RAID 10)
Data Store / Cache Size	1.2TB
NICs (default)	4 x 10/100/1000 copper (onboard) + 2 x 10/100/1000 copper bypass (slot 1)
NICs (expandable to)	4 x 10/100/1000 copper (onboard) + 32 x 10/100/1000/10000 copper/fiber
Bridges/Bypass Pairs (default)	1
Bridges/Bypass Pairs (expandable to)	16
Interface NIC Slots	6
Console	RS-232 male DB-9
Power Supply Type	Dual Internal, Hotswap
Power Rating	Two redundant 1100W hot-plug power supplies
Environment	0-40C, storage temp 20-80C relative humidity 0-90% (non-condensing)
Approvals	CE,FCC, Certified/RoHS

## Software Specifications

Licensed Bandwidth (full duplex)	x700 Software Visibility & Control		x800 Software Visibility, Control & Optimization	
	2.5G	5G	155	310
Max. Device Throughput (Mbps)	10,000	10,000	10,000	10,000
Max. Concurrent Flows	5,000,000	8,000,000	1,024,000	1,024,000
Max. L7 New Connection Rate	30,000	60,000	10,000	10,000
Reports (PDF)	100	100	100	100
SLAs	300	300	300	300
APS Objects	300	300	300	300
Policies	4,096	4,096	4,096	4,096
Edge Cache Max. Throughput (Mbps)	225	225	225	225
Edge Cache Requests per Second	2,500	2,500	2,500	2,500
		Optimized Connections	12,000	12,000
		WAN Optimization (Mbps)	155	310
		Max WAN Shaped/QoS (Gbps)	2.5	5
		Disk Size (TB)	1.5	1.5
		Data Storage (TB)	1.2	1.2

## About Exinda ®

Exinda is a proven global supplier of WAN Optimization and Traffic Shaping products. The company has helped over 2,000 organizations in 80 countries worldwide to reduce network operating costs and ensure consistent application performance over the WAN. The Exinda Unified Performance Management (UPM) solution encompasses application visibility, control, optimization and intelligent acceleration – all within a single network appliance that is affordable and easy to manage.

### Global/US Headquarters

8 Faneuil Hall Marketplace  
3rd Floor  
Boston, MA 02109  
United States

+1 877 439 4632  
[info.usa@exinda.com](mailto:info.usa@exinda.com)

### APAC Headquarters

13 Harper Street  
Abbotsford VIC 3067  
Australia

+1 800 394632  
[info.apac@exinda.com](mailto:info.apac@exinda.com)

### EMEA Headquarters

Quatro House  
Lyon Way  
Camberley  
GU16 7ER  
United Kingdom

+44 1276 804804  
[info.emea@exinda.com](mailto:info.emea@exinda.com)